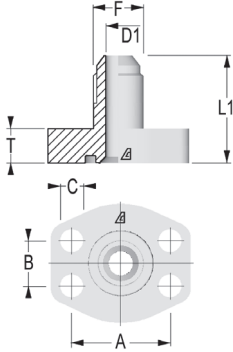


**R1A25M133W**

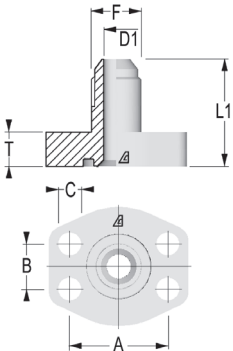
Straight Flange SAE J518  
Code 61 - JIC  
Low Pressure



Code	OD mm	OD in	F1	Flange size	L1 mm	T mm	A mm	B mm	C mm	MAX WP psi
R1A25M133W-0808	12	1/2"	3/4"-16	1/2"	41	14	38,1	17,5	9	5000
R1A25M133W-1008	14-16	5/8"	7/8"-14	1/2"	44	14	38,1	17,5	9	5000
R1A25M133W-1012	14-16	5/8"	7/8"-14	3/4"	47	15	47,63	22,2	11	5000
R1A25M133W-1208	18-20	3/4"	1"1/16-12	1/2"	46	14	38,1	17,5	9	5000
R1A25M133W-1212	18-20	3/4"	1"1/16-12	3/4"	49	15	47,63	22,2	11	5000
R1A25M133W-1216	18-20	3/4"	1"1/16-12	1"	51	17	52,37	26,2	11	5000
R1A25M133W-1612	25	1"	1"5/16-12	3/4"	50	15	47,63	22,2	11	5000
R1A25M133W-1616	25	1"	1"5/16-12	1"	52	17	52,37	26,2	11	5000
R1A25M133W-1620	25	1"	1"5/16-12	1"1/4	56	21	58,7	30,2	11,5	4000
R1A25M133W-2016	30-32	1" 1/4	1"5/8-12	1"	54	17	52,37	26,2	11	5000
R1A25M133W-2020	30-32	1" 1/4	1"5/8-12	1"1/4	58	21	58,37	30,2	11,5	4000
R1A25M133W-2024	30-32	1" 1/4	1"5/8-12	1"1/2	64	24	69,85	35,7	13,5	3000
R1A25M133W-2420	38	1" 1/2	1"7/8-12	1"1/4	61	21	58,37	30,2	11,5	4000
R1A25M133W-2424	38	1" 1/2	1"7/8-12	1"1/2	67	24	69,85	35,7	13,5	3000

**R1A25M136W**

Straight Flange SAE J518  
Code 62 - JIC  
High Pressure



Code	OD mm	OD in	F1	Flange size	L1 mm	T mm	A mm	B mm	C mm	MAX WP psi
R1A25M136W-0808	12	1/2"	3/4"-16	1/2"	42	15	40,49	18,2	9	6000
R1A25M136W-1008	14-16	5/8"	7/8"-14	1/2"	45	15	40,49	18,2	9	6000
R1A25M136W-1012	14-16	5/8"	7/8"-14	3/4"	49	17	50,8	23,8	11	6000
R1A25M136W-1208	18-20	3/4"	1"1/16-12	1/2"	47	15	40,49	18,2	9	6000
R1A25M136W-1212	18-20	3/4"	1"1/16-12	3/4"	51	17	50,8	23,8	11	6000
R1A25M136W-1216	18-20	3/4"	1"1/16-12	1"	58	21	57,15	27,8	13	6000
R1A25M136W-1612	25	1"	1"5/16-12	3/4"	52	17	50,8	23,8	11	6000
R1A25M136W-1616	25	1"	1"5/16-12	1"	59	21	57,15	27,8	13	6000
R1A25M136W-1620	25	1"	1"5/16-12	1"1/4	64	24	66,68	31,8	15	6000
R1A25M136W-2016	30-32	1" 1/4	1"5/8-12	1"	61	21	57,15	27,8	13	6000
R1A25M136W-2020	30-32	1" 1/4	1"5/8-12	1"1/4	66	24	66,68	31,8	15	6000
R1A25M136W-2024	30-32	1" 1/4	1"5/8-12	1"1/2	70	27	79,38	36,5	17	6000
R1A25M136W-2420	38	1" 1/2	1"7/8-12	1"1/4	69	24	66,68	31,8	15	6000
R1A25M136W-2424	38	1" 1/2	1"7/8-12	1"1/2	73	27	79,38	36,5	17	6000